

ADAM ×



EOFY SPECIAL OFFERS!  
May - June 2026

EOFY EQUIPMENT OFFERS - UPGRADE & SAVE

**EOFY  
SALE**



**EASE-IN-SHIELDS™**  
Protective Loupe Inserts

**15%  
OFF!**

**VALO  
GRAND**



**VALOX**  
BROADBAND LED CURING LIGHT



Curing & Diagnostic lenses

Scan for product information and videos



Each product promotion or discount must be used separately and cannot be combined with other offers\*

• Call us: 1800 29 09 29 • [info.anz@ultradent.com](mailto:info.anz@ultradent.com) • [www.ultradent.com.au](http://www.ultradent.com.au) •

© 2026 Ultradent Products, Inc. All Rights Reserved.



Ultradent ANZ



@ultradentanz

## EOFY CONSUMABLE OFFERS

**gleo™**  
fluoride varnish

*Delicious protection,  
Smart delivery.*

Gleo™ fluoride varnish offers care in a cost-efficient bulk-tube format, perfect for high-volume clinics.



**EOFY  
SALE**

**NEW LAUNCH**

**BUY 2  
GET 1  
FREE!**

## UltraSeal XT™ hydro<sup>+</sup> | UltraSeal XT™ plus<sup>+</sup>

**UltraSeal XT Hydro** and **UltraSeal XT Plus** are light-cured, radiopaque, fluoride-releasing pit and fissure sealants with a highly filled resin for increased wear resistance. Their thixotropic properties allow them to flow into pits and fissures while staying in place, ensuring complete coverage and long-lasting protection—ideal for moist (Hydro) and dry-field (Plus) conditions.



**EOFY  
SALE**

**BUY 3  
GET 1  
FREE!**

## PRODUCT SPOTLIGHT

**COMING  
SOON**

ahh...way better  
**GISHY GOO!**

**Gishy Goo** material is a specially formulated silicone elastomer that can be placed over wires, brackets, fixed appliances, etc. Patients say this unique material is simple to place, stays on longer, and is easier to remove than wax. Simply squeeze a pea-size amount from the syringe, mix by hand for 10 seconds, and place over the appliance. There is no messy cleanup and Gishy Goo material will stay in place until it is time to be removed, up to 12 hours!

It's the **improved** replacement for wax.



Scan for product information and videos



Each product promotion or discount must be used separately and cannot be combined with other offers\*

• Call us: 1800 29 09 29 • info.anz@ultradent.com • www.ultradent.com.au •

© 2026 Ultradent Products, Inc. All Rights Reserved.



Ultradent ANZ



@ultradentanz

EOFY VALUE FEATURED OFFER

FREE PEAK UNIVERSAL BOND (#4543) WITH EVERY PURCHASE OF PORCELAIN ETCH KIT (405-AU) & SILANE

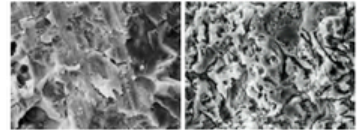
Ultradent™ Porcelain Etch and Silane Etchants

Porcelain Etch and Silane work together to create a strong, reliable bond—using a buffered hydrofluoric acid etch for controlled surface preparation, followed by silane to enhance chemical adhesion. When used together with a bonding resin, this protocol has been shown to deliver the highest bond strength to porcelain.

Paired with Peak™ Universal Bond, a proven gold standard in adhesive performance, the system provides consistent, high-strength bonding across a wide range of indications—giving clinicians confidence in both durability and long-term outcomes.



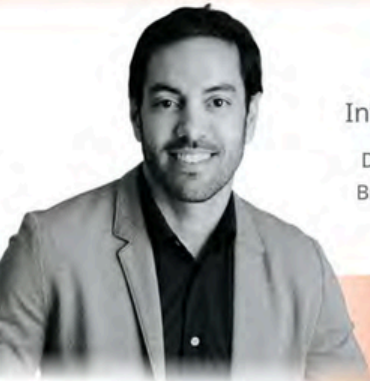
Porcelain Surface Before and After Porcelain Etch



Diamond-cut porcelain surface. (Photo courtesy of Dr. Cornelis Pameijer)

Same porcelain surface following a 90-second etch with Ultradent Porcelain Etch. (Photo courtesy of Dr. Cornelis Pameijer)

AUSTRALIAN & NEW ZEALAND EDUCATION ROADSHOW 2026



DR RAFAEL CALIXTO

International Speaker, Restorative Dentistry Specialist & Educator

Dr. Rafael Calixto is a Specialist, MSc, and PhD in Operative Dentistry from UNESP, Brazil. He is a Professor in the Master's Program in Rehabilitation at UCAM-Madrid and lectures internationally across Brazil, Latin America, Europe, and Africa.

A Smart and Simplified Approach to Direct Composite Restorations

Join Dr. Rafael Calixto for an intensive, **one-day hands-on** course designed to simplify and elevate your direct composite workflow. Don't miss a rare opportunity to learn **hands-on** from a globally respected educator.



Sign Up Now & Secure Your Spot

Proudly Sponsored by



Auckland, NZ  
27 August 2026

Melbourne, VIC  
29 August 2026

Perth, WA  
31 August 2026

Brisbane, QLD  
02 September 2026

Sydney, NSW  
04 September 2026

SCAN TO REGISTER

6 CPD Points Included — LIMITED SEATS AVAILABLE

Scan for product information and videos



Each product promotion or discount must be used separately and cannot be combined with other offers\*

• Call us: 1800 29 09 29 • info.anz@ultradent.com • www.ultradent.com.au •

© 2026 Ultradent Products, Inc. All Rights Reserved.



Ultradent ANZ @ultradentanz

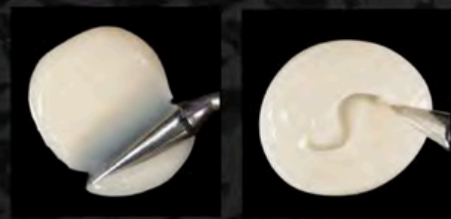
# Forma™

ZIRCONIA NANO-HYBRID COMPOSITE

COMING  
SOON



EXCLUSIVELY  
NEW & NOW IN  
**AUSTRALIA**



- Smooth and easy to sculpt
- Does not stick to instruments
- Won't slump out of place

Applicable to kits & single units

## WHERE STRENGTH MEETS SIMPLICITY.

FORMA composite offers natural tooth color with just one body shade (OneStepColor) or for restorations that require layering, there are dentin, enamel, and effect shades with different degrees of translucency. Its formula, consisting of zirconia and ytterbium trifluoride, allows all shades to offer excellent optical and mechanical properties: translucency, opacity, fluorescence, and strength.

STRONG, VERSATILE, AND EASY TO SCULPT!

OneStepColor

### FORMA KIT BODY SHADES

- 1x A1B, 2x A2B, 1x A3B, 1x A3.5B



### FORMA KIT - EVERYDAY SHADES

- 1x A1B, 1x A2B, 1x A3B, 1x A2E, 1x Opaquer



### FORMA KIT - BLEACH SHADES

- 1x BL1, 1x BL2, 1x WE, 1x WB, 1x WD



## FORMA™ composite shades and kits

← + Opacity - →

Dentine	Body	Enamel	Effect Colors
● A1D	● A1B	● A1E	● Incisal
● A2D	● A2B	● A2E	● Transparent
● A3D	● A3B	● A3E	● Opaquer
	● A3.5B	● A3.5E	
	● A4B	● A4E	
	● B1B	● B1E	
	● B2B	● B2E	
	● C1B	● C2E	
	● C2B		
<b>Bleach Shades</b>	● BL1		
● WD	● BL2		
	● WE	● WE	
	● WB	● XWE	
	● XWB		



FORMA Refill Packet - 1 x 4 g syringe

Scan for product information and videos



Each product promotion or discount must be used separately and cannot be combined with other offers\*

• Call us: 1800 29 09 29 • info.anz@ultradent.com • www.ultradent.com.au •

© 2026 Ultradent Products, Inc. All Rights Reserved.



Ultradent ANZ



@ultradentanz